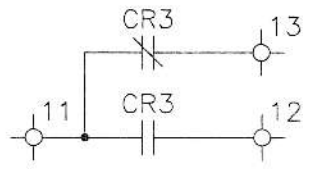
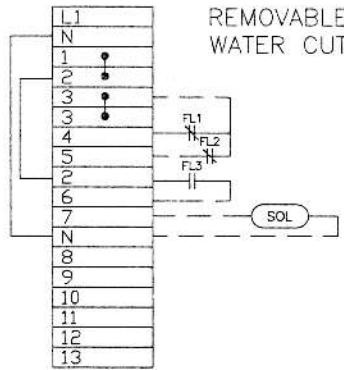
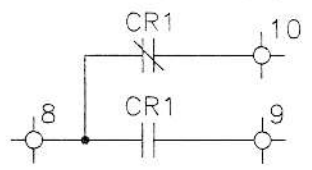


NORMAL WATER LEVEL ALARM CONTACTS



LOW WATER LEVEL ALARM CONTACTS



REMOVABLE JUMPER FOR HIGH WATER CUT OFF OPTION

NOTES:

1. ALL RELAY CONTACTS ARE SHOWN IN DE-ENERGIZED STATE.
2. ALL RELAYS ARE 120V COIL XT RELAYS
3. CR1, CR2, & CR1 ARE XTRE10B22A
4. ALL FLOATS SHOWN IN DRY STATE

OPTIONS	SYSTEM INFORMATION		CUSTOMER INFORMATION
	CAT NO: <u>INPC2</u>		PROJECT: <u>TANK STATUS PANEL</u>
	<u>120V</u> <u>60HZ</u> <u> </u> AMPS		
	CONTROL VOLTAGE: <u>120VAC</u>		CUSTOMER: <u>R.T. STEARNS</u>
	ENCLOSURE TYPE: <u>NEMA 1</u>		CUSTOMER #: <u> </u>

ROUTING	THE INFORMATION ON THIS DOCUMENT IS CREATED BY CUTLER-HAMMER. IT IS DISCLOSED IN CONFIDENCE AND IS ONLY TO BE USED FOR THE PURPOSE IN WHICH IT IS SUPPLIED.	DFTR	DESS.	DATE	Cutler-Hammer	LVCA AIRDRIE, AB
1 - JOB FILE		EH		01/25/08		
2 - PRODUCTION		APPD	APPR.	DATE	TITLE	
	LES RENSEIGNEMENTS CI-DESSUS ONT ÉTÉ ELABORÉS PAR CUTLER-HAMMER. ILS VOUS SONT DIVULGUÉS EN TOUTE CONFIDANCE ET LEUR UTILISATION SE LIMITE AUX SEULES FINS POUR LESQUELLES ILS VOUS SONT TRANSMIS.	APPD	APPR.	DATE	TITLE	
NEW YORK CITY APPROVED					TYPE	
MEA 18-02-E					ELECTRIC REMOTE ALARM PANEL	WIRING DIAGRAM
	PRODUCT CODE	REVISION	DWG SIZE / ECHELLE	G.O.	16BC532E	PAGE
	CODE PRODUIT	2	A	C.G.		1 OF 1